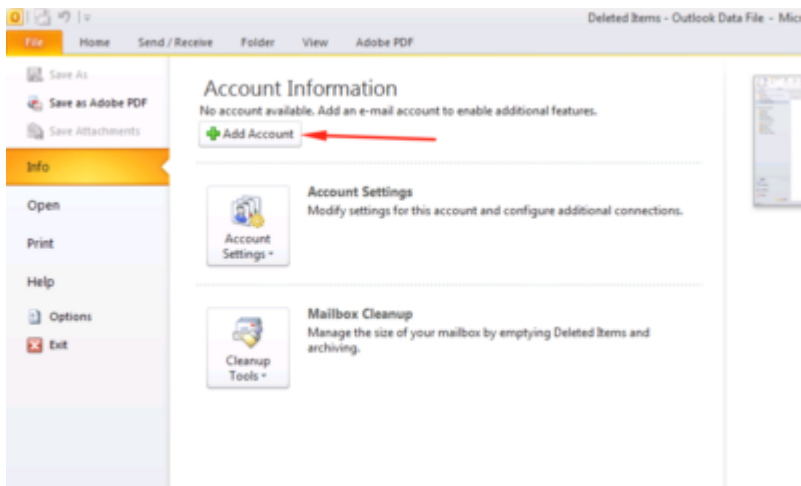
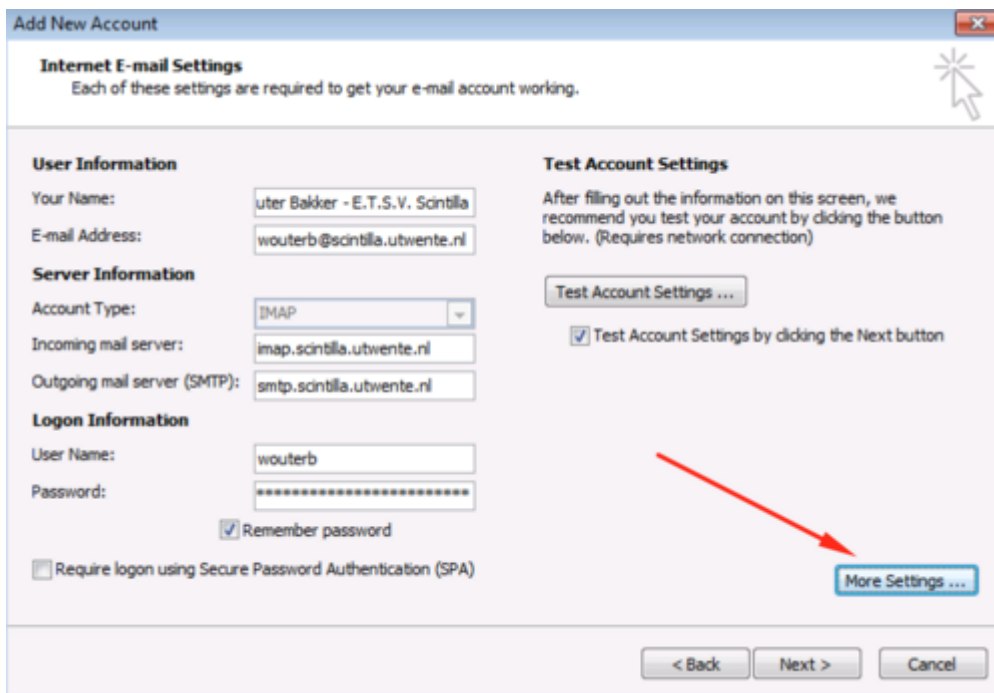


# Read your Scintilla mail in Outlook 2010

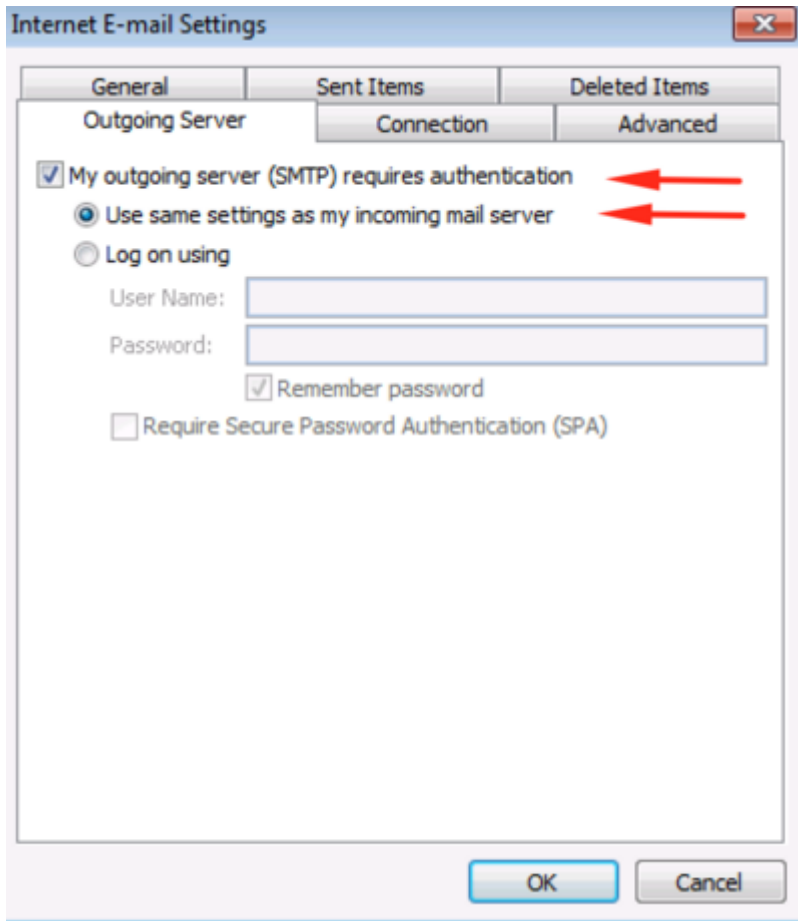
- Open Microsoft Outlook.
- Press File and then Add Account.



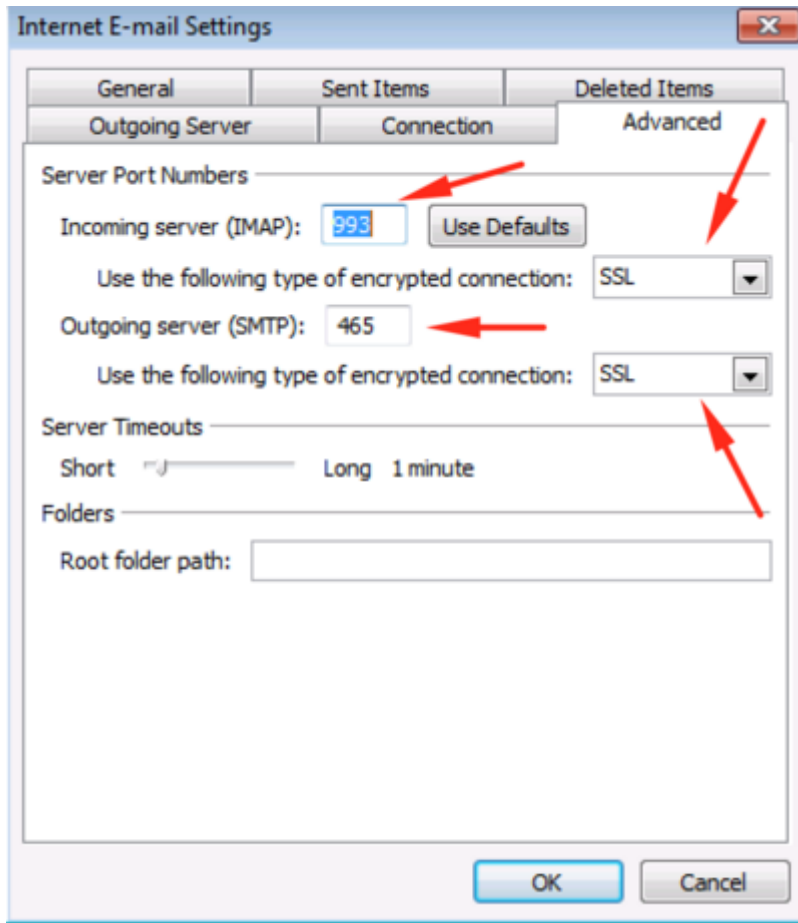
- Select Manually configure server settings or additional server types and press next.
- Select Internet E-mail and press next.
- Type your name and your email address.
- Select by Account Type IMAP.
- Type by incoming mail server: imap.scintilla.utwente.nl
- Type by outgoing mail server: smtp.scintilla.utwente.nl
- Type your username and your password.
- Press More Settings.



- Press Outgoing Server.
- Select My outgoing server (SMTP) requires authentication.
- Select Use same settings as my incoming mail server.



- Select Advanced.
- Select for the incoming server and the outgoing server TLS as encrypting.
- Type 143 as port number for the incoming server.
- Type 587 as port number for the outgoing server.



- Press OK.
- Press next.
- Press close.
- Press Finish

From: <https://oldwiki.scintilla.utwente.nl/> - **old wiki**

Permanent link: <https://oldwiki.scintilla.utwente.nl/it:mail:setup-outlook>

Last update: **2016/10/12 20:57**

